



SOMO

Brookhill

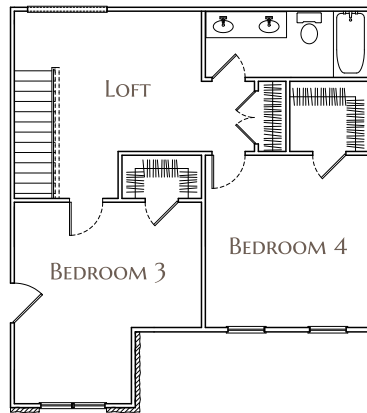
HOMEPLAN

CONTEMPORARY 1-1/2 STORY HOME WITH
2,585 SF OF FINISHED AREA

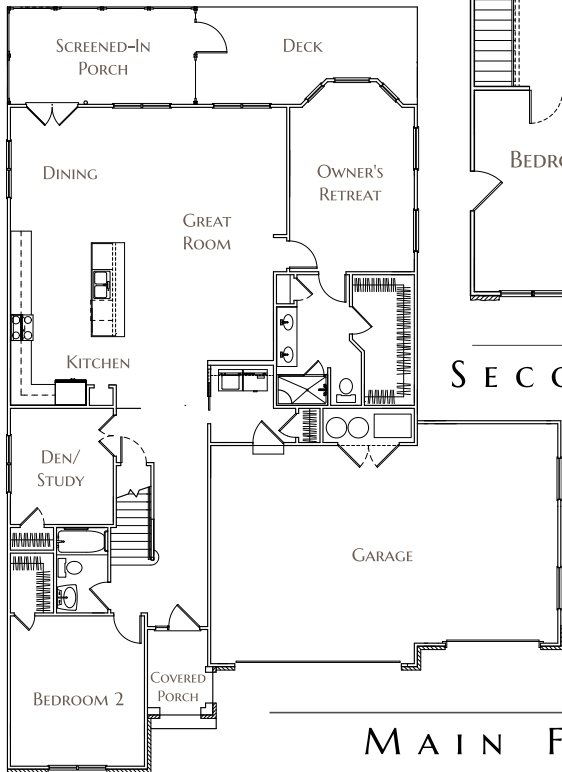


FEATURES

- Covered and Screened-In Porches
- Exterior Stone Accents
- 18' Cathedral Ceiling in Living Area
- 4 Bedrooms plus Den/Study, Mudroom, and 3 Spacious Full Baths
- Private Owners Retreat with Large Walk-In Closet
- Bay Window in Owner's Retreat
- Gourmet Kitchen and Pantry with Stainless Appliances
- Amish-Built Custom Cabinets all with Soft-Close Doors
- Granite, Quartz Countertops
- High Efficiency HVAC, Well Insulated



SECOND FLOOR



MAIN FLOOR

SOMO IS CONVENIENTLY LOCATED ON BLOOMINGTON'S DYNAMIC SOUTHWEST SIDE, JUST 4 MILES FROM DOWNTOWN AND INDIANA UNIVERSITY. PROUDLY OFFERED BY WININGER CONSTRUCTION, A FAMILY-OWNED COMPANY WITH OVER 80 YEARS OF EXPERIENCE DEVELOPING AND CONNECTING SUCCESSFUL COMMUNITIES IN SOUTHERN AND CENTRAL INDIANA.



WININGERCONSTRUCTION.COM

812.929.6825 LIVESOMO.COM



Our policy of attention to quality design and construction requires that specifications, equipment, and dimensions be subject to change without notice. All measurements are approximate. Renderings are artist's conception and may not be to scale. Contact your Wininger Construction Representative for current details.